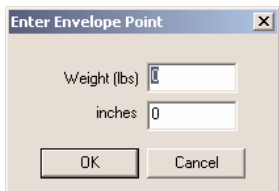
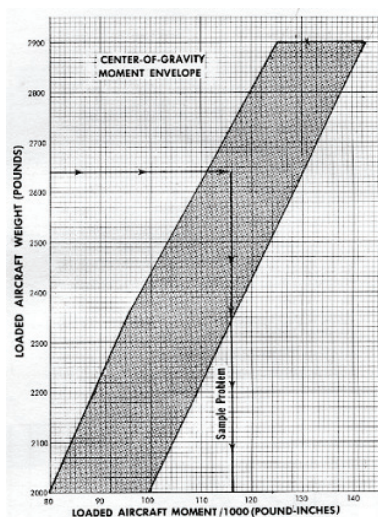


## Entering the CG Envelope into Golden Eagle FlightPrep® from POH Charts

To create the CG envelope in GEFP, you need to edit the aircraft profile and select the CG Envelope Tab. If you look at the CG chart in the POH (Pilot's Operating Handbook), you will see that it looks like a polygon with definite vertices or points. You need to add the measurements for each vertex or point into GEFP. When you select the "Add" button in GEFP, the Enter Envelope Point window opens:



The center of gravity charts in POHs can be presented in two forms. The first is a graph of weight (in pounds) and arm (in inches Aft of Datum). The second form is a graph of weight (in pounds) and moment (in pound inches). If the chart in your POH is in the first form, you can directly read the weight and arm values off the chart and enter them in the above window.



If the chart in your POH is in the second form, as shown here, you can directly enter the weight but you must calculate the arm. This can be done using the formula  $Arm = Moment/Weight$ . Most charts of this type show the moment as a moment divided by some weight factor, for example;

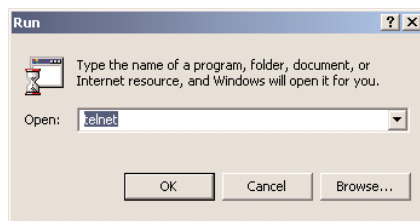
1,000, so you must take this into account when making your calculations. If you want to enter the point at 2,000 lbs and 80 moment/1,000 pound-inches, the calculation would be  $Arm = 80 * 1000 / 2000$  with the result of 40 inches for the arm. You would then enter this as an envelope point of 2,000 lbs and 40 inches. Calculate and enter all the points of the CG envelope in a similar manner.

## Using Microsoft Telnet, HyperTerminal and IE7

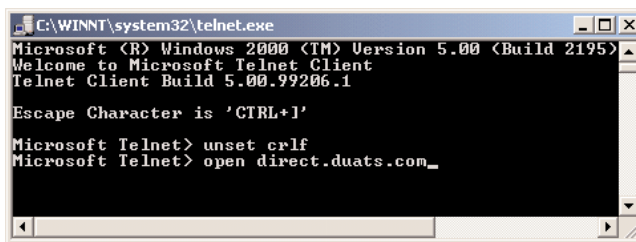
There are many users that still access CSC DUATS via the original "menu" interface that was developed for DUATS. To use this interface you must use a "terminal emulator". You can connect to the DUATS "menu" interface on a windows PC via the Internet by running either the Microsoft Telnet program or HyperTerminal. Let's take a look how to do this and what problems you may encounter.

### Using Microsoft Telnet

To use this program, you need to select from your PC's start menu "Run..."



In the box that opens, enter "telnet" and select "OK". You will see a new window open and prompt you with Microsoft Telnet>



At this prompt, you need to enter the command "unset crlf". Next, open the connection to DUATS by entering "open direct.duats.com". Your computer must be connected to the Internet for this to work. Once connected, you will see the prompt to "Enter access code or last name:". Enter your access code and then password when prompted. You are now presented

*Continued on back*

Please retain your DUATS Newsletters for future reference.

**DUATS... Still the Fastest Way into the Air and Still Free**

Download the latest Golden Eagle FlightPrep software from FlightPrep.com or call for a free disk at 1-800-345-3828 or 1-703-818-5404 or e-mail [duats@duats.com](mailto:duats@duats.com)

Data line: 800-767-9989  
 Tech support: 800-345-3828 press number 4 after operator  
 FAX: 703-818-4723  
 Internet Telnet: [direct.duats.com](http://direct.duats.com)  
 Internet Web: <http://www.duats.com> or <http://131.131.7.104>  
 Secure Web: <https://www.duats.com>

with a DUATS menu from which you can request all the basic DUATS functions.

**ADVANCED PC USER Hint-** If you want to eliminate the need to enter “unset crlf” every time you use telnet for DUATS, you can change the registry entry as follows:

1. Locate HKEY\_CURRENT\_USER→Software→Microsoft→Telnet.
2. Change the value of the REG\_DWORD “CRLF” to zero (0).

The registry is changed by using regedit. **WARNING** - Only experienced PC users should attempt this since any errors encountered while editing the registry may disable your PC.

## Using HyperTerminal for Telnet Access

Windows PCs also have another terminal emulator available. It is called HyperTerminal and you can locate it at Start→Programs→Accessories→Communications→HyperTerminal. Once you have selected HyperTerminal, you can get started by selecting File→New Connection in the screen that opened. This will open another window. Enter DUATS for a name and then select “OK”. In the pull down for “Connect using:” select “TCP/IP (Winsock)”. This will change the upper portions of the window and then enter “direct.duats.com” into the “Host address:” field. Now select “OK” and a window will open and you will be connected to CSC DUATS and the access code and password prompt will be presented.

**HyperTerminal Problems** - Some versions of HyperTerminal supplied on Windows have a problem where the data in the scroll back buffer appears corrupted when you try to view it. To fix this, download the latest copy of HyperTerminal Private Edition (HTPE) from [www.hilgraeve.com](http://www.hilgraeve.com).

**Hints** - You can use HyperTerminal to connect to the toll free CSC DUATS number at 1-800-767-9989. When you set up a “New Connection”, choose a name like “DUATS Dial” and then select the modem or the comport (i.e. COM1) your modem is attached to on in the pull down for “Connect using:” Enter the toll free number above and you will dial in and connect directly to the DUATS main server.

**Telnet and Internet Explorer 7 (IE7)** - Located on our web page at [www.duats.com](http://www.duats.com) is a shortcut to our telnet site at [direct.duats.com](http://direct.duats.com). By clicking on this link, your default Telnet program is automatically run and connects to the address. If you use IE7, this link does not work anymore. Microsoft has disabled the recognition of a telnet link in this version. To use telnet, you will have to use either Microsoft Telnet or HyperTerminal as described above. If you use HyperTerminal, you can search and locate the file “\*.ht” and make a shortcut on your desktop by selecting the name you assigned for your DUATS connection, i.e., [duats.ht](#) and right-clicking in the search results window.

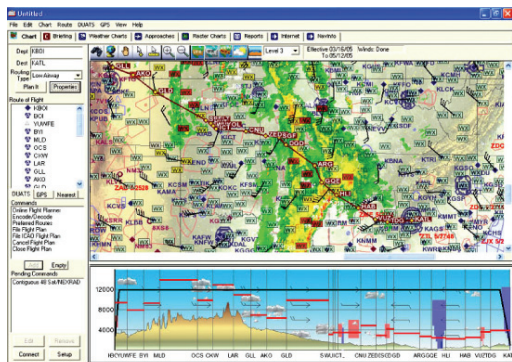
**ADVANCED PC USER Hint-** You can enable Telnet recognition in IE7 by adding a registry entry as follows:

1. Locate HKEY\_CURRENT\_USER→Software→Microsoft→Internet Explorer→Main→FeatureControl
2. Add the key “FEATURE\_DISABLE\_TELNET\_PROTOCOL” if it doesn't exist.
3. Add a New DWORD with the name “iexplore.exe” and the value of zero (0) to the key.

Your IE7 will now recognize the telnet link.

The registry is changed by using regedit. **WARNING** - Only experienced PC users should attempt this since any errors encountered while editing the registry may disable your PC.

## Supercharge Your Golden Eagle Flight Planner



### Golden Eagle Plus® Flight Planning Software \$99.95 per year

Offline flight planning with internet access. Contains all the features available with the free Golden Eagle FlightPrep® (GEFP) DUATS software, plus more.

- Offline Flight Planning
- Flight Planning Wizard
- Premium METAR Weather
- Premium Profile View
- Premium Tripkit
- Graphic Weight and Balance
- Instrument Procedures for the U.S.
- WAC Charts for the U.S.
- Updated every 28 days on CD

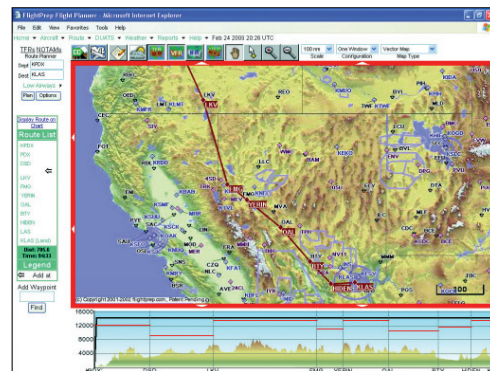
Powered by FlightPrep



Essential to Every Mission

Both for just \$199.95 per year

To order or for more info,  
see [www.flightprep.com](http://www.flightprep.com) or  
call 503.678.4360



### 100% Online Internet Flight Planner \$149.95 per year

Always plan your flights with current data and latest FlightPrep® features 100% online, anywhere and anytime. Plan with accurate weather and efficient routes.

- Online Flight Planning
- Flight Planning Wizard
- Point and Click Routing
- DUATS Weather with Overlay
- Premium Tripkit
- Graphic Weight and Balance
- Instrument Procedures for the U.S.
- Low Enroute Charts for the U.S.
- Sectional and WAC Charts for the U.S.