

Golden Eagle FlightPrep® Updates

Golden Eagle FlightPrep® (GEFP) updates are automatically available every 56 days, which is the same date the FAA makes the new charts available. Along with the data updates are program updates. These program updates provide more features and functionality for your GEFP Software. They are provided to you free when you go through the update procedure.

The following are a few things to remember to be sure you have a successful update:

The GEFP software will check to see if the software or the data is out of date and needs to be updated. This occurs automatically when you “run” the program. Also if you look at the box to the right of the pulldown zoom level selector, you will be able to see the “effective” dates of the data loaded in GEFP.

If your program or data is out of date, you will see a message window open that will give you the option to update your data or to continue to use the old data.



If you select to update and you are still connected to the Internet, you will open the Flight Prep website. If your page does not say “Golden Eagle FlightPrep® Basic Data Updater,” position your cursor on the dark blue “Downloads” box, located on the left side of the page, and select “Golden Eagle Update.”

On the Update page, you will see instructions on how to check your current version of GEFP. Once you have done that, follow the instructions that apply for your version.

In either case, after you have downloaded the update, be sure to close the GEFP program before running the update. If the updater page was opened from inside of the GEFP program, then it will show the label “FlightPrep” (not Golden Eagle) minimized in the task bar window on your PC. You must close this window, which is the GEFP program. After closing GEFP, locate the update file that was just downloaded and run (double click) it to install the update. Once the install is complete you can open GEFP and you will have the current navigational data plus any upgrades to GEFP.

Important - Change your Generic/Rental Tail Numbers

Many pilots have set up profiles with the tail numbers set to generic or rental. This frequently occurs if you have used one of the default templates that was shipped with Golden Eagle FlightPrep®. In any case, as soon as you know the true tail number of the aircraft that you will be flying, you should enter that tail number before requesting weather briefings and especially filing flight plans. If you do not, the FAA will not be able to find your flight plan and you will have to refile before you take off.

Entering Manual or “User Defined” Routes in Golden Eagle FlightPrep®

Manual or User Defined routes can be entered into the Golden Eagle FlightPrep®(GEFP). This is accomplished by selecting the “Online Flight Planner” command located in the Commands Window to the left of the planning chart. When you select and “add” or double click on this command, an entry box will appear. In the Routing section, use the pull down menu for “Type of Routing” and select “User Defined Routing.” A large entry area for the User Defined Routing will appear below the pull down menu. Here you may enter your route of flight. Remember to separate the elements of your flight with a single space. You do not need to repeat the point of departure or your destination in the route of flight.

After you have filled out the fields in the Online Flight Planner form, select “Connect” to instantly get route validation and a flight log from the DUATS main computer. You will need to be connected to the Internet or have modem access for this to work. If the route is valid, GEFP will transfer the route of flight to the chart and populate the other applicable forms with the flight information.

Please retain your DUATS Newsletters for future reference.

DUATS...Still the Fastest Way into the Air and Still Free

Download the latest Golden Eagle FlightPrep software from FlightPrep.com or call for a free disk at 1-800-345-3828 or 1-703-818-5404 or e-mail duats@duats.com

Data line: 800-767-9989

Tech support: 800-345-3828 press number 4 after operator

FAX: 703-818-4723

Internet Telnet: direct.duats.com

Internet Web: <http://www.duats.com> or <http://131.131.7.104>

Secure Web: <https://duats.com>

Let's now take a closer look at what can be entered for the route of flight:

- Enter nothing or "DIRECT" for great circle routing.
- Enter a sequence of route elements separated by a single SPACE between elements. e.g. TON CIP FKL TDT ERI
- Route elements can consist of the following in any valid sequence:
 - AIRPORT (VFR Only) 2 to 4 alphanumeric
 - NAVAID 2 to 3 alphanumeric
 - FIX 5 alphanumeric
 - AIRWAY 2 to 4 alphanumeric
 - Control routes (e.g. B24)
 - Victor routes (e.g. V21)
 - Jet routes (e.g. J31)
 - Colored routes (e.g. A300)
 - RNAV routes (e.g. Q14)
 - Gulf Routes (e.g. Q105)
 - Atlantic routes (e.g. AR9)
 - Bahamas routes (e.g. BR65V)
 - LF/MF routes (e.g. UB646)
 - Low/High frequency routes (e.g. V257 J2)
 - SOCAL routes (e.g. BURM14)
 - SID (Standard Instrument Departure Route) (e.g., SUMMA2. SUMMA)
 - STAR (Standard Arrival Route) (e.g., IRONS. IRONS2)
 - Fix Radial Distance (eight to eleven characters)- two to five character navigational aid ID, followed by 3 digit degrees magnetic and 3 digit distance in nautical miles with no spaces between characters. Example: BTG045007 identifies a fix 7 nm 045 degrees from the BTG VORTAC.
 - Latitude/Longitude (ddmm/ddmm or ddmm/dddmm) - North latitudes and West longitudes only. EXAMPLE: 4500/12105

- En Route Delays - consists of an element separator (/), followed by the letter D, followed by the hours and minutes separated by a plus sign (+). Example: a fifteen minute enroute delay at Nottingham VORTAC is typed OTT/D0+15. Routing VIA route elements can be accomplished by using the following auto-route functions:

- *V VOR to VOR inserting Victor Airways if present
- *A Victor Airways
- *G GPS/LORAN waypoints
- *J Jet Airways.

These can be mixed any way you desire simply start with a valid route element and enter a route element between the desired auto-route functions.

REMEMBER - to use a route on Victor or Jet Airway you must enter a valid NAVAID or FIX that is on the airway of choice for entrance and another for exit from the airway.

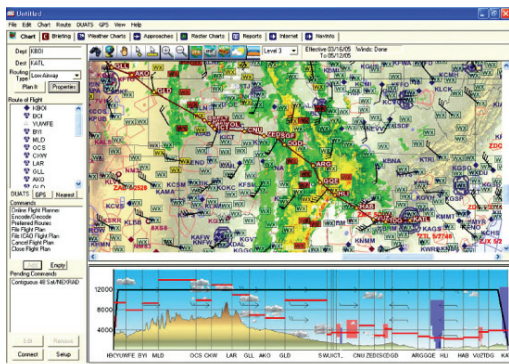
Routing VIA route elements can be accomplished by using the following auto-route functions:

- *V VOR to VOR inserting Victor Airways if present
Dep: KDAY
Route: DQN *V DYR
Dest: KDYR
- *A Victor Airways
Dep: KHUM
Route: LEV *A IAH
Dest: KDWH
- *G GPS/LORAN waypoints
Dep: KSZL
Route: SZL *G ABQ
Dest: KAEG
- *J Jet Airways
Dep: KIAD
Route: CSN *J DHP
Dest: KMIA

Combination of navigation for route:

- Dep: KMRY
- Route: SNS *A MVA *J CHE *G FQF
- Dest: KAPA

Supercharge Your Golden Eagle Flight Planner



Golden Eagle Plus® Flight Planning Software \$99.95 per year

Offline flight planning with internet access. Contains all the features available with the free Golden Eagle FlightPrep® (GEFP) DUATS software, plus more.

- Offline Flight Planning
- Flight Planning Wizard
- Premium METAR Weather
- Premium Profile View
- Primum Tripkit
- Graphic Weight and Balance
- Instrument Procedures for the U.S.
- WAC Charts for the U.S.
- Updated every 28 days on CD

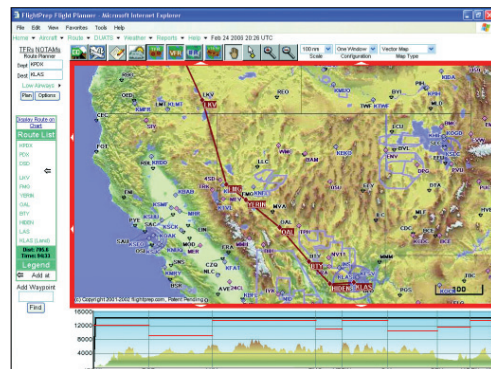
Powered by FlightPrep



Essential to Every Mission

Both for just \$199.95 per year

To order,
contact flightprep.com or
call 503.678.4360



100% Online Internet Flight Planner \$149.95 per year

Always plan your flights with current data and latest FlightPrep® features 100% online, anywhere and anytime. Plan with accurate weather and efficient routes.

- Online Flight Planning
- Flight Planning Wizard
- Point and Click Routing
- DUATS Weather with Overlay
- Primum Tripkit
- Graphic Weight and Balance
- Instrument Procedures for the U.S.
- Low Enroute Charts for the U.S.
- Sectional and WAC Charts for the U.S.