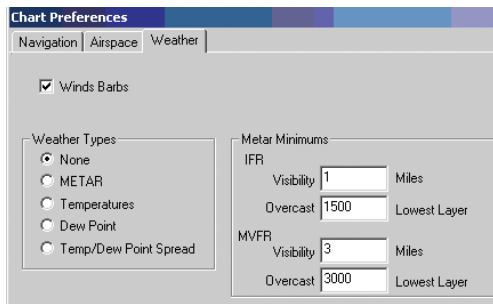


New Features for GEFP and Still Free!

The next version of GEFP, version 3.0, will introduce several new features:

A Weather Tab

The Weather TAB controls the display of the above features, and has been added to the Chart Preferences. Everything selected from this tab will persist across each of the zoom levels.

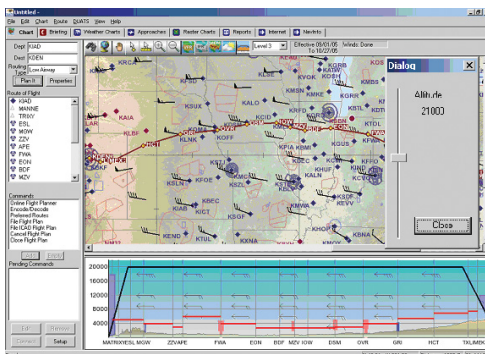


Only one weather type can be displayed at a time.

METAR Minimums - Allows for setting personal minimums for the display of the METAR on the Chart. The display is represented by green, yellow, and red based on the personal entry for this criteria.

Enhanced Weather Overlays - Winds aloft, METARS, Temperatures, Dew Point, and Temp/Dew Point Spread can be graphically represented on the charts. Lets take a quick look at each feature:

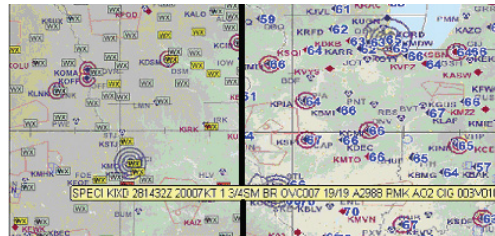
Wind Barbs - will display the surface winds on the chart. You will also get altitude winds displayed on the route "Profile Display". The altitude for the wind display is selectable by selecting "Wind Altitude" under the menu "View" and moving the "slide bar" in the pop-up.



METAR - The METARs will appear as boxes with the letters "WX" in them. These boxes will be color coded green, yellow, or red based on the personal minimums set up by the user. If the user has the pointer set in "router mode," moving the pointer over the "WX" box will display the entire METAR.

METAR Display

Temperature Display



Temperatures, Dew Point, and Temp/Dew Point Spread - The Temperatures, Dew Point, or Temp/Dew Point Spread will appear as values located at the METAR reporting locations. The value that will be displayed is selected in the "Weather Tab" in "Preferences" under the "Chart" pull-down Menu.

Weight and Balance

Based upon the currently selected aircraft (see [Properties]), this feature permits a graphic depiction of the implications of various aircraft loading scenarios. To utilize this tool, click the "Weight" column for the desired "Moment-Arm" loading station.

Please retain your DUATS Newsletters for future reference.

DUATS...Still the Fastest Way into the Air & Still Free

Download the latest Golden Eagle FlightPrep software from FlightPrep.com or call for a free disk at 1-800-345-3828 or 1-703-818-5404 or e-mail duats@duats.com

Data line: 800-767-9989

Tech support: 800-345-3828 press number 4 after operator

FAX: 703-818-4723

Internet Telnet: direct.duats.com

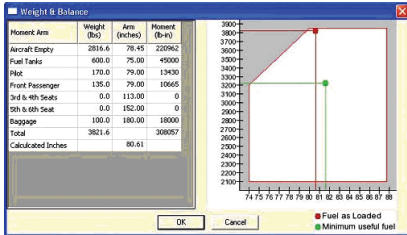
Internet Web: <http://www.duats.com> or <http://131.131.7.104>

Secure Web: <https://duats.com>

Enter the proposed actual weight and click in any other weight station. The system will calculate the change and graphically render the changes in the diagram on the right side of the window.

Notes:

1. Fuel is loaded in pounds in the Moment Arm stations defined with the word "Fuel."
2. To change the definition of the loading calculations, you must redefine the aircraft model via the [Edit][Aircraft][Weight & Balance] tool.
3. Minimum useful fuel is defined when all usable fuel is exhausted. Therefore, in all actuality, you will probably be landing at a higher gross weight and a different center of gravity than displayed as indicated by the green "Minimum useful fuel" dot.



Moment Arms

Click the Moment Arm tab and click Add. Enter the Moment Arm description, default weight, and ARM inches (typically found in your POH). Normally, you should enter the aircraft's empty weight conditions.

Note: When entering the Moment Arm(s) for fuel, the word "fuel" needs to be in the description permitting accurate "as loaded" calculations. Click on OK after each new Moment Arm entry.

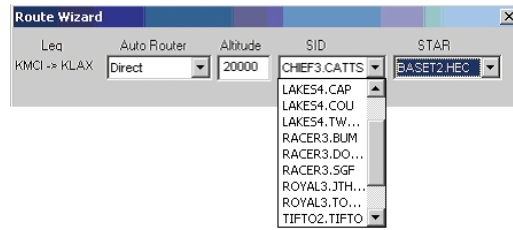
Moment Arm(s) for fuel, the word "fuel" needs to be in the description permitting accurate "as loaded" calculations. Click on OK after each new Moment Arm entry.

CG Envelope

Click the CG Envelope tab and click Add. Beginning with the empty aircraft weight and forward-most CG point, enter Weight and Inches (you will find this in your POH) and click OK to save the data. Proceed to the next heavier weight (typically the same forward CG point). Progress clockwise around the envelope until all the data points are completed. **Note:** As you proceed, you may get a rather strange looking envelope that changes with each data point you create. This is okay. It will resemble the diagram in your POH when you enter the last data point (typically the max gross weight and rear-most CG position).

New Route Planning Options - Two new options have been added to the "Route" pull-down menu. These are Route Wizard and Compare Altitudes. Let us look at each one:

Route Wizard - This function provides the option of selecting SDs and STARS as input to the current GEFP Auto Router.



Compare Altitudes - Once a route has been developed using the GEFP flight planner, select "Compare Altitudes" under the menu "Route" to compare time and fuel burn for different altitudes. For example, the altitude of 14,000 feet in the chart below is optimum for both time and fuel for the aircraft selected. By simply selecting an altitude and clicking the "Select" button, the flight log is automatically regenerated and the flight plan is updated. Various altitudes can be added for comparison by entering the altitude in the box at the top of the form and clicking "Add."

Altitude	Winds		No Winds	
	Time	Fuel	Time	Fuel
6000	0819	33.6	0810	33.1
8000	0853	36.0	0802	32.6
10000	0845	35.7	0754	32.1
12000	0846	35.7	0746	31.6
14000	0813	33.7	0739	31.2
16000	0834	35.2	0732	30.8
18000	0832	35.3	0725	30.5
20000	0826	35.0	0719	30.2
22000	0840	36.0	0714	29.8
35000	0924	39.5	0647	28.5

Any number of altitudes can be added.

Add ChartCase® Electronic Flight Bag (EFB) capability to Golden Eagle FlightPrep®



In addition to integrated Golden Eagle FlightPrep® flight planning, ChartCase® delivers premium EFB capability. Enjoy the convenience of having all your charts right at your fingertips in the cockpit. Get all the Sectional, WAC, Enroute charts and FAA NACO Instrument Approach Procedures (IAPs).

NEW! Moving Map & Check List - Delivered standard on ChartCase® Professional. The moving map takes NMEA data from your GPS receiver and adds outstanding position awareness.

The checklist option allows you to create virtually any checklist for your aircraft.

GoldenEagle Plus® Software

WACs and all U.S. IAPs. Annual subscription on CD **\$99.95**

ChartCase® EFB Software

Sectional, WACs, Low Enroute charts and all U.S. IAPs. Annual subscription on DVD **\$349.95**

ChartCase Professional® Software

Sectional, WACs, Low & High Enroute charts and all U.S. IAPs, Moving Map & Checklist. Annual subscription on DVD **\$499.95**

Complete Electronic Flight Bag Packages

These packages include the top-rated Motion Computing® Tablet PC, pre-loaded with all required software. For maximum compatibility, each system is delivered with ChartCase® installed and checked. This solution provides all the EFB capability from flight planning to enroute chart viewing in one pilot friendly package.

ChartCase® Basic

- LE1600c Motion Tablet PC
 - VIEWANYWHERE™ DISPLAY
 - 30GB HDD
 - 512MB RAM
 - DVD/CD-R
 - USB Keyboard
 - ChartCase EFB® Software
- \$2,949.95**

ChartCase® Premium

- LE1600 Motion Tablet PC
 - VIEWANYWHERE™ DISPLAY
 - 60GB HDD
 - 768 MB RAM
 - DVD/CD-R
 - Convertable keyboard
 - ChartCase Professional® Software
- \$3,595.95**
(add shipping and handling to all orders)



www.flightprep.com

503.678.4360

Powered by FlightPrep



Essential to Every Mission