

## Abbreviated Weather Route Briefing

The Abbreviated Weather Route Briefing, unlike Standard or Outlook Briefings, allows pilots to select the weather types. By selecting the specific weather desired, the search through many pages of information is limited to just a few pages of very specific weather. The information is still presented within a defined corridor and the weather is available in both "Plain Language" and standard FAA formats.

Whether you are using Web DUATS or Cirrus, select Abbreviated Weather Route Briefing and you will be presented with one of the forms shown. Fill in the requested information as described in this article. An explanation is provided where there are differences between Web DUATS and Cirrus.

### Departure Time:

For Cirrus - Enter proposed Departure Time in Universal Coordinated Time (UTC) as (hhmm), or (+mmmm) format. Example #1: hhmm - 2200. Example #2: +mmmm, where mmmm is the

number of minutes past the current time (e.g., +45). Valid numbers are from +two digit minutes up to +1439 minutes.

### Cirrus Abbreviated Route Display

For Web DUATS - Enter proposed Departure Time as (hhmm) or (mmmm). Example #1: hhmm - 2200. Example #2: mmmm, where mmmm is the number of minutes past the current time (e.g., +45). Valid numbers are from two digit minutes up to 1439 minutes. When entering hour and minutes format, you must use the dropdown menu and select a time zone. When entering minutes format, you must select a time zone from the Output Format box shown at the bottom of the Web Abbreviated Route Display.

**Altitude:** Enter requested Altitude in Flight Level format. Example #1: 120 for 12,000 feet. Example #2: 80 for 8,000 feet. No "leading" zeros are required.

**Estimated Time Enroute:** Enter estimated time as hhmm. Example: 0230 (2 hours and 30 minutes)

**Aircraft ID:** Enter aircraft registration number, or select one from the aircraft database (complete ID must be entered, i.e., N12345)

### Web Abbreviated Route Display

### Briefing Type:

For Cirrus - Several optional weather selections and output weather briefings are available. Plain Language is optional. Either or both may be selected. For Web DUATS - The selection of FAA Weather or Plain Language depends on the time zone selected from either the Departure Time box or the Output Format box.

### Select Weather Types:

For Cirrus - Click on the button "Select Weather Types" to display a dropdown list of all FAA Aviation Weather types available. Click on the types to select or unselect (selected types have check marks). You can also use the arrow keys to scroll to the desired item and select or unselect using the spacebar.

Please retain your DUATS Newsletters for future reference.

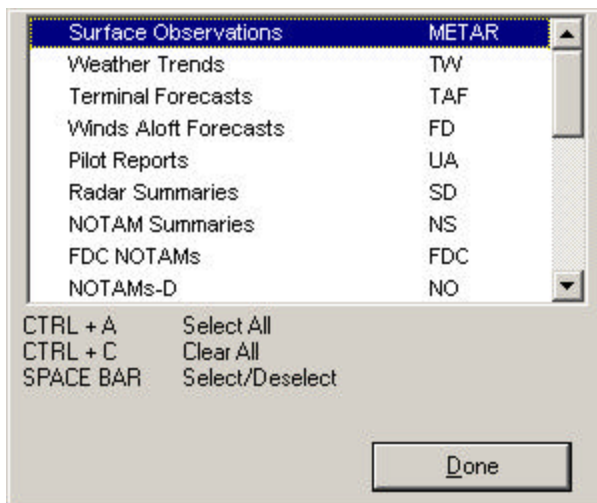
## DUATS...Still the Fastest Way into the Air & Still Free

Download the latest version of the Cirrus software 4.0 from either the Internet or place your order by calling 1-800-345-3828 or 1-703-818-4634 or e-mail [duats@dyncorp.com](mailto:duats@dyncorp.com)

Data line: 800-767-9989  
 Tech support: 800-345-3828 press number 4 after operator  
 FAX: 703-818-4723  
 Internet Telnet: [direct.duats.com](http://direct.duats.com)  
 Internet Web: <http://www.duats.com>

Available Weather Types display in Cirrus. Using the scroll bar shows more options (see Cirrus Weather Products Display)

### Cirrus Weather Products Display



For Web DUATS- Weather Types available are displayed below. Click on the types to select or unselect (selected types have check marks).

### Web Weather Products Display

<b>Current Weather Products</b> <input checked="" type="checkbox"/> Current Surface Observations (METAR, SPECI) <input type="checkbox"/> Weather Trends (3 hours of METAR, SPECI) <input checked="" type="checkbox"/> Radar Weather Reports (SD) <input checked="" type="checkbox"/> Pilot Reports (UA, UUA)	<b>Aviation Weather Advisory Products</b> <input type="checkbox"/> SIGMETs (WS, UWS) <input type="checkbox"/> AIRMETs (WA, UWA) <input type="checkbox"/> Center Weather Advisories (CWA, UCWA) <input type="checkbox"/> Convective SIGMETs (WST) <input type="checkbox"/> Severe Aviation Weather (AWW, WW-A)
<b>Forecast Weather Products</b> <input type="checkbox"/> Area Forecasts (FA) <input checked="" type="checkbox"/> Terminal Area Forecasts (TAF) <input checked="" type="checkbox"/> Winds & Temperatures Aloft (FD)	<b>General Weather Advisory Products</b> <input type="checkbox"/> Hurricane Advisories (WH) <input type="checkbox"/> Convective Outlook (AC)
<b>Pilot Information Products</b> <input checked="" type="checkbox"/> Notices to Airmen (NOTAMs) <input type="checkbox"/> Flight Data Center (FDC) NOTAMs <input type="checkbox"/> Flight Data Center (FDC) NOTAMs not associated with a specific facility <input type="checkbox"/> ATC delay and flow control advisories	

**Advisories:** There are several optional advisory notices available.

**General FDC NOTAMs:** (Optional) Checking this box adds Flight Data Center (FDC) NOTAMs that are not associated with an affected facility identifier to your briefing. (This option is only available if you have chosen FDC NOTAMs.)

**Adverse Weather:** (Optional) Checking this box will provide adverse weather associated with the requested route of flight or area. Weather types presented are: FA, WW, WS, CWA, WST, and WA.

**Tropical Depression/Hurricane Advisories:** (Optional) Atlantic, Pacific, and Gulf advisories are provided.

For Cirrus - These are offered in the Abbreviated Weather Dialog box under Advisories.

For Web DUATS - These are offered in the General Weather Advisory Products and Pilot Information Products dialog boxes.

**Departure - Destination** - Alternate: Enter LOCATION ID. Either three or four character identifier may be used. Example: BOS or KBOS.

**Route:** Enter standard route elements or leave blank for direct.

The DUATS flight planner can be used to automatically generate a route of flight.

See Route Elements for a list of what you can use for your route of flight.

**Weather Corridor Width:** Determines the weather provided within a specified corridor along the requested route of flight. The default is 50 NM, selectable from 10-100 NM in 5 NM increments. The wind corridor is separate and selectable from 150 to 600 NM Example: An input of 40 for weather corridor will display weather within 20 NM each side of the route of flight and an input of 200 for wind corridor will display winds 100 NM on either side of route of flight.

### Plain Language Time Zone:

For Cirrus - This box is only available when Plain Language is selected as a Briefing Type. A selection here only applies to this briefing, the default time zone selected in Setup is not changed. For Web DUATS - Plain language time zone is selected if using hhmm in the "Departure Time" box or if using mmmm in the "Output Format" box.

### Installation Of Cirrus From A Download

With new versions of the Windows operating system, there have been some changes in how WinZip executable programs are handled. Newer versions of Windows do not always unzip the files into the location specified in the WinZip file.

Click on files to be downloaded and check the 'Unzip to folder' window to get the location where the files will be unzipped on your computer. After closing the Unzip window, go to the new location and place the cursor on any white space. Press the right mouse button and click View, then Details. This will put all folders and files on the left side of the window in alphabetical sequence. Go down the list and find the Setup file that has the extension of '.exe' or look to the right and find the Setup file that is an 'Application.' Double left click this file and the Installshield program will open. All of the rest of the current directions on the Web are correct.

If you are having trouble downloading from the Web DUATS page [www.duats.com/cirrus.shtml](http://www.duats.com/cirrus.shtml), try our alternate site:

<http://www.duats.com/altcirrus.shtml>

Even though the display may not seem to change, if the new address is displayed you are on a different server.

**Look for a new version of Cirrus in February 2002.**