



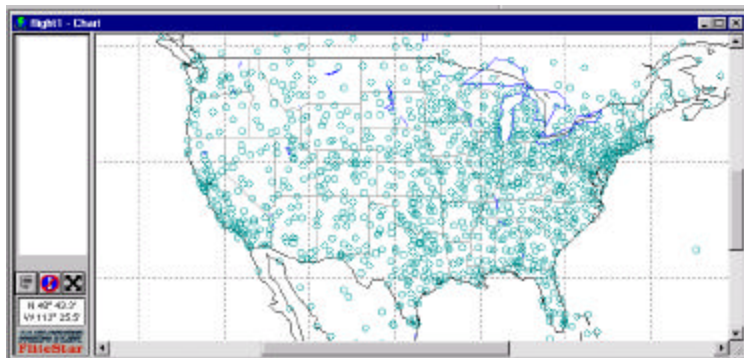
The Cirrus Flight Planning Chart

With the Cirrus Flight Planning Chart you can plan your flight graphically. You see your flight plan both as a route on a map and as a list of waypoints. When you open Cirrus for the first time you will see a document called "DUATS - flight1" (the program default name). You will see a chart map of the areas covered by DUATS, and depending on the Chart Preferences selected, you may see VOR's, airports, and major cities displayed. Cirrus contains a database of all airports. The map at this scale may be cluttered with with orange dots (airports). The chart shown below has only nav aids selected. A complete list of preferences is available in the "Chart" pull-down-menu.

The Chart presentation consists of several features that make it easy to use and plan a flight.

The Route List is the column on the left side of the chart, currently empty.

Cirrus displays the selected waypoints in this Route List Panel, while showing the route graphically on the chart. By default, the route list shows the waypoint identifiers only. If you would like to see the NAMES of the waypoints as well, grab the SPLIT-BAR with your mouse, and DRAG it to the right to WIDEN the route list.



Latitude and Longitude of the location of the mouse on the chart area is displayed in the lower left corner under the Route List.

N 48° 43.3'
W 113° 25.5'

Control Icons - There are three Icons at the bottom of the Route List.

The first Icon sets parameters for the location of the next waypoint selected. Clicking this Icon cycles between three options. When the Icon looks like this, waypoints are added to the end of the route.



With this setting, waypoints will be added before whatever waypoint is highlighted in the list.



And with this setting, waypoints are added after whatever waypoints are highlighted in the list.



These options provide flexibility and convenience if you want to insert one or more waypoints to complete the route of flight. You **must** highlight a waypoint in the Route List before using either of these options.

The second button determines whether Cirrus displays information about a waypoint you click on. Clicking this button toggles the function on and off.

When the Icon looks like this, Cirrus adds a waypoint to your route the moment you click on it. This allows routes to be assembled quickly.



When the Icon looks like this, Cirrus displays information about the waypoint first, then gives you a chance to add it to your route.



When clicking on this button you will zoom out to the previous selected wider view of the chart. Clicking the RIGHT mouse button in the chart also zooms out. This button does not zoom in the Chart.



Zooming the Chart

If you wish to zoom in on a specific region, "rubber-band" the region by pressing and holding down the mouse button on the upper-left corner of the area you wish to zoom to and dragging the mouse pointer to the lower-right

Please retain your DUATS Newsletters for future reference.

DUATS...Still the Fastest Way into the Air & Still Free

Download the latest version of the Cirrus software 3.03 from either the Internet or place your order by calling 1-800-345-3828 or 1-703-818-4634 or e-mail duats@gsc.gte.com

Data line: 800-767-9989

Tech support: 800-345-3828 press number 4 after operator

FAX: 703-818-4723

Internet Telnet: duats.gtefsd.com

Internet Web: <http://www.duats.com>

corner of that area. Let go of the mouse button and the chart will zoom in. To zoom back out, click the right mouse button. You can also zoom in and out of the chart by using the plus and minus keys on your keyboard.

Panning the Chart

Use the scroll bars in the Chart window to move up and down or sideways on the map. Grab the button and move it the direction you want to move, or click the arrow keys at the ends of the scroll bars to move a small amount. As with other Windows software, click above the scroll button on a vertical bar to move up a full screen; click below the scroll button to move down a full screen. Click to the left of the button on a horizontal scroll bar to move left a full screen, and click to the right of the button to move a full screen right.

Now that you have learned about the features available through the Chart, you may want to hear about the best ways to use these features to plan a flight.

Building a flight route using the Chart

Zoom the chart to the area in which you wish to plan your flight, set the preferences you want to see, and start pointing and clicking. If a location you click is both a navaid and an airport you will be required to choose between the two options offered. Preferences can be made in order or you can use the insert Icon described previously. To add a waypoint just click on the airport or VOR you wish to add. Airports are represented by orange dots, and VORs by green circles. If you don't see any airports, make sure you have the airport preference set for the zoom level you have selected. That's all there is to it!

Cirrus contains a database of "all airports." Because of the large number of airports, finding a specific airport may be difficult and can only be done when a high zoom level is selected. You can control the number of airports by going to www.duats.com and downloading an airport database. When you get to Web DUATS, do not log on, just go to the bottom of the page. Select the Cirrus Information page (link), go about half way down the next page to DOWNLOADS and select which Cirrus database you want. You are provided with three options: all runways, runways 2500ft or greater, and runways 5000ft or greater. These data files are updated every 56 days in conjunction with the FAA's Chart cycle. By selecting one of the databases with fewer airports, it is easier to find the airport you want. Otherwise you can use the Chart/Search function.

Chart/Search



To use this function, click on the Icon shown or select the search function from the "Chart" pull-down-menu.

There are several advantages of using the Chart/Search feature. You don't have to find the airport on the Chart before you can add it to your list, and you don't have to know the 3 or 4 letter ID to find it.



To find an airport or navaid, type in the name, identifier, or a partial name of the airport or VOR you are searching for. Click Search (ALT+S) and this will bring up a list of waypoints matching what you typed. To locate a waypoint on the chart, select the waypoint from the list of "matches," then choose the "Locate" button followed by clicking the "Close" button. Cirrus will switch you back to the Chart and put a flashing circle around the selected waypoint.

Inserting Waypoints

Waypoints can be inserted by either the Rubber Band or the Chart/Search Method. To insert a waypoint into a route, just grab the route line (point with the mouse and press the button) stretch it over the waypoint you wish to insert, and let go (release the mouse button).

The Route List Insert Method: Another way of inserting a waypoint is to select the point on the route list you would like to insert, then click the insert mode Icon at the

bottom of the route list to select the desired setting.

Select this setting if you want the new waypoint to appear after the selected waypoint. This setting is most convenient if you wish to insert several waypoints in order.



Select this setting if you want the new waypoint to appear before the selected waypoint.



Finally, on the chart, click on the waypoint you would like to insert in the middle of the route. The new waypoint will appear on the list behind or in front of what was selected, depending on the setting of the insert mode icon.

Deleting Waypoints

Highlight any number of waypoints in the Route List and press the DELETE key. The waypoints disappear from the route list and the route changes shape because those waypoints are no longer included.

Changing Waypoints in a Route

In the previous section, we showed you how to insert a new waypoint into your route. To change an existing waypoint, you use this same "rubber band" technique, but you move the route off one waypoint onto another. There's little difference between inserting and moving in terms of what you do with the mouse. To move the route, you grab the route line where it crosses a waypoint, pull it off that waypoint, and move it to another waypoint.

Getting Information about Waypoints

To obtain information on waypoints, turn on the information Icon before clicking on the waypoint.

When clicking on the waypoint, Cirrus opens an information window. Choose Route (Alt+R) to add the waypoint to the route. Choose Cancel (Esc) if this is not the waypoint you wanted.

Disable waypoint information when you don't need it and want to assemble routes quickly.

Another way to get waypoint information is to double click on the waypoint name in the route list, even when the waypoint info Icon is off.

See also "Setting the Chart Preferences."