

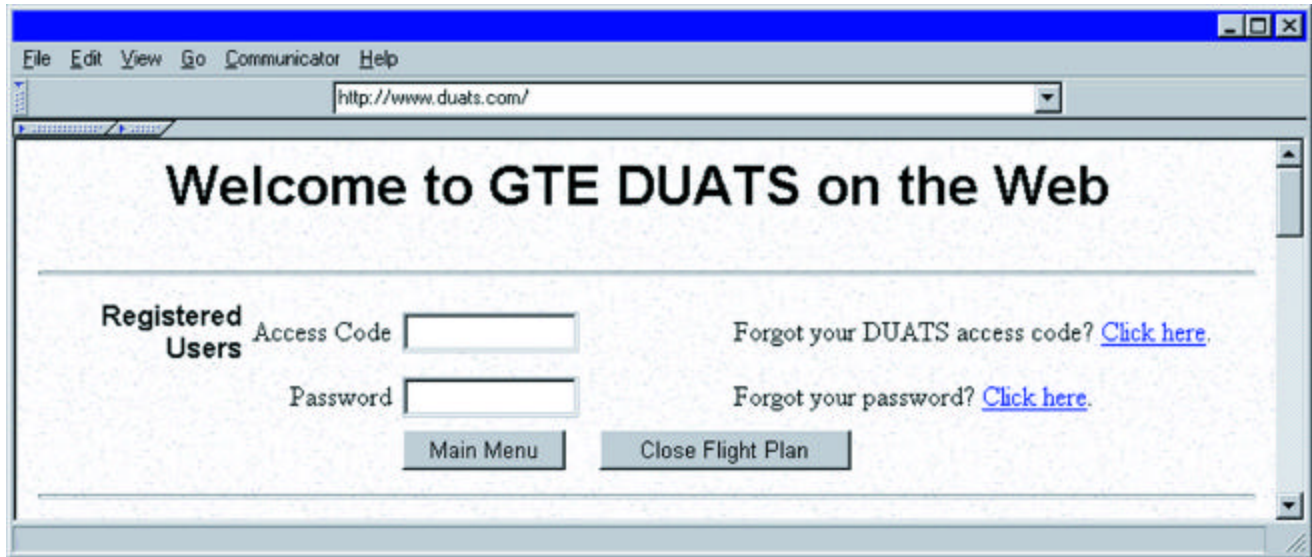


# Flyer

Special AOPA Edition

Issue No. 25

April 1999



Visit our NEW Web DUATS at [www.duats.com](http://www.duats.com). The new site has many features that make using the Web easier. First, the site is not filled with graphical features so it is very fast. Second, we have made the service intuitive and have provided help functions and features throughout. Third, Web DUATS provides all of the DUATS functions. Fourth, during a session in Web DUATS, all input from the user and all information provided by the service is carried over to subsequent functions.

The first page of Web DUATS has several sections, some of which provide DUATS service functions and others are strictly informational. You may want to look at what is offered on this page before you proceed to the service. The following is a brief explanation of each section:

## Registered Users

As a registered user, you already have a GTE DUATS access code and password. Enter them and click on "Main Menu." This will advance you to another page offering all of the DUATS functions. You do not need a new access code or password to use Web DUATS. If you have forgotten either your access code or password, use the appropriate link provided in this section. You will be provided with directions on how to obtain or change this information.

A second button is located in this section "Close Flight Plan." You can close your VFR flight plan here, however, you still have to enter your access code and password.

## New Users

If you have never used GTE DUATS and want access, go to the section entitled "New Users." Click on "New User Registration." You will be asked to enter some important, personal information. This information is confidential and is available only to you except in the event of Search and Rescue. You are encouraged to keep the information up-to-date.

DUATS will automatically use this data precluding you from having to type the information in every time you use the service. We have provided you with "Help" throughout to assist you in filling in the information. When the form is complete just submit it and DUATS will provide you with an access code. Write down your access code and password for future reference. Notice that you are also provided with the option of providing a "Personalized Access Code." The

*Please retain your DUATS Newsletters for Future Reference.*

## **DUATS...Still the Fastest Way into the Air & Still Free**

Download the latest version of the Cirrus software 3.03 from either the Internet or place your order by calling 1-800-345-3828 or 1-703-818-4634 or e-mail [duats@gsc.gte.com](mailto:duats@gsc.gte.com)

Data line: 800-767-9989

Tech support: 800-345-3828 press number 4 after operator

Internet Telnet: [duats.gtfds.com](http://duats.gtfds.com)

Internet Web: <http://www.duats.com>

personalized code can be used in lieu of the computer generated code DUATS automatically issues. Once you are registered, you can use either code to access DUATS.

If you are not accepted by the system, please read and follow the instructions provided on the Sign Up Page.

## **General Information**

This is a thumb nail sketch of the DUATS service. Look for additional information to be added to this section in the future.

## **Assistance and Feedback**

You will find frequently asked questions about Web DUATS and the various Browsers used to access the service, status of future enhancements to the service, and any other information about Web DUATS. This is a good reference section if something does not seem to work as advertised.

## **Telnet Access**

You may access via Telnet by clicking on the address [duats.gtfsd.com](http://duats.gtfsd.com) located in this section.

## **Cirrus Program for Microsoft Windows Users**

Information on Cirrus software, announcements about Cirrus, Cirrus software download, and 56 day data update downloads for Cirrus are available by clicking on the link "Cirrus Information page."

As the NEW Web DUATS evolves there will be updates to this first page, so we encourage you to review the information periodically.

## **Web DUATS "Main Menu"**

Now that you have reviewed the initial login page, entered your access code and password, and selected "Main Menu," you are ready to request flight planning information from DUATS. There are three basic sections: Weather, Flight Plans, and System Functions. You can choose any one of the sections by selecting a link or you can just scroll down the web page stopping wherever you want.

You will see two basic functional

formats, drop-down-list and buttons, for getting DUATS information. For example, the drop-down-list for the "Standard Briefing" provides the options: Low Altitude, High Altitude, and Area. Select one, then click on the button "Standard Briefing." You will be presented with a form appropriate to the option selected.

You will find that Web DUATS provides interaction with the main DUATS program that could not be accomplished through Windows based software. You can update your personal profile information either directly in DUATS or on Web DUATS and be assured the information will be available to you regardless of how you access DUATS. On Web DUATS the function to view and update is "Main DUATS Profile." Another function that allows interaction with the main DUATS is Flight Planner output profiles. You can change your profile directly through the Web.

Coming soon will be the ability to manage aircraft performance profiles in main DUATS from the Web. This cannot be done right now. To use the Flight Planner on the Web you must create performance profiles on the Web. However, these are simple to do and easy to modify and maintain, plus you are not limited to five profiles as you currently are in main DUATS.

To establish a New Profile in Web DUATS select "Aircraft Profiles" from the Flight Plans section. You will be offered two profile formats. Segment-Model is a standard climb, cruise, descent profile normally associated with light aircraft. The Hour-Model profile requires hourly fuel burn as an input. Select the profile that best fits your aircraft. Once created, the profiles are made available in a drop-down-list for selection in the Flight Planner.

## **Can't Log into DUATS or You Forgot your Access Code or Password**

### **Access:**

If you have problems getting access to GTE DUATS for any reason, please send us a copy of your current medical and pilot certificate. If you do not have a medical and believe you should be allowed access to DUATS, provide information on the type of aircraft you fly and any other information you believe pertains to you gaining access. For a detailed description of "Who is Eligible to Use DUATS" go to Frequently Asked Questions in Web DUATS ([www.duats.com](http://www.duats.com)). You can FAX the information to 703-818-4593 or you can scan the information and send it in an e-mail to [duats@gsc.gte.com](mailto:duats@gsc.gte.com).

### **Access Code or Password:**

If you are registered in GTE DUATS, the system will not allow you to register again.

It is highly recommended that you use Web DUATS to obtain your access code and request a new password. Just click the link provided on the first login page. You will be asked to enter last name, pilot certificate number, the requested password and your e-mail address. Confirmation of the password will be e-mailed to you within minutes.

If you do not have access to Web DUATS, you will need to enter DUATS interactively. At the first prompt, enter your last name. You will then be asked for your pilot certificate number. If you are a registered user of GTE DUATS, the system will provide your access code and offer you the opportunity to enter your password. If you enter a valid password, you will be asked for validation by entering it a second time. (If the system does not provide you with an access code, but asks for your first name, you have never been registered in GTE DUATS. Please complete all of the prompts for full registration).

You can now use the access code and password to access DUATS. Be sure to write down this information for future use.

If you cannot gain access to DUATS through one of these procedures, provide your full name, pilot certificate number and requested new password. The password must be 6 to 8 characters in any alpha numeric combination. The most efficient method to request this is via e-mail to [duats@gsc.gte.com](mailto:duats@gsc.gte.com). Or you can call 1-800-345-3828.

**Coming Soon.....  
Weather graphics to Web DUATS**