



New Cirrus Software Available

New Features in Cirrus Version 3.0 for GTE DUATS:

- Internet access via Cirrus
- Enhanced Weather Graphics
- Satellite Infrared
- Satellite Visual

Internet Connectivity using Cirrus 3.0

You can now access all the functions of GTE DUATS, including expanded free Color Graphics, through direct 1-800 service or through an Internet connection via your ISP. If you are connected to a Local Area Network (LAN) with Internet access, Cirrus will automatically connect. If you use dial-up service to an Internet Service Provider (ISP) you must first make the dial-up connection.

GTE DUATS Cirrus Version 3.0 is intended to run on Win 95, 98, and NT operating systems. We will continue to support Win 3.1 and 3.11 users with Cirrus 2.2. The Cirrus CD has both versions and Install Shield will automatically detect you computer's Operating System and install the correct version. You can also install Version 2.2 manually on any of the above mentioned Operating Systems - just open the Folder Version 2.2 and click on setup.



Why use the Internet?

Internet access provides additional flexibility for DUATS users. Those users having high speed access to their ISP will achieve faster access to DUATS. However, direct dial 1-800 access will continue to be provided. Using the Internet allows the user to determine the speed of access and embraces the flexibility of Internet service.

Cirrus uses Telephony Applications Programming Interface (TAPI)

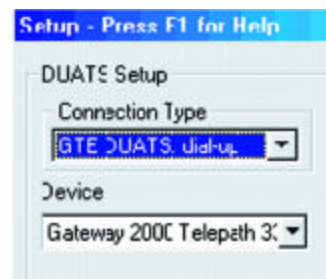
GTE has made using dial-up DUATS as simple as possible by taking advantage of Microsoft Windows TAPI. This technology allows other programs to take advantage of the modem configuration set under the Windows environment.

What does this mean? If you modem is already set to run in Windows 95, 98, or NT, Cirrus automatically uses that configuration and communicates with DUATS through the Windows application. This reduces the need to reconfigure your modem to access DUATS.

NOTE: If your modem is not automatically identified, TAPI may not be installed. TAPI can be found on your original Windows 95, 98, or NT diskette or CD-ROM. You can download the latest version of TAPI from the Microsoft web site.

Is TAPI Installed?

From "Setup" in Cirrus Version 3.0 select "dial-up" as the connection type. If the Device box displays "No lines available" you may not have TAPI installed. To check if TAPI is installed open the program Hyper Terminal. (To find it click on "Start", then go to "Accessories". It may be in the submenu "Communications"). A Connection Description box will come up. Type in DUATS and click OK. If TAPI is installed, a list of your modems will come up in the "Connect Using" box. If you do not have TAPI, it can be loaded from the original Windows 95, 98, or NT disk/CD. Or, you can go to www.microsoft.com/tapi and download TAPI from Microsoft.



TAPI is installed but still can't connect using direct dial to DUATS?

Cirrus 3.0 uses Microsoft's technology to identify the installed modem and dial DUATS. That means modem configuration, dialing properties, COM Port selection, volume, speed, and driver installa-

Please retain your DUATS Newsletters for Future Reference.

DUATS...Still the Fastest Way into the Air & Still Free

Download the latest version of the Cirrus software 2.2 from either the Internet or place your order by calling 1-800-345-3828 or 1-703-818-4634

Data line: 800-767-9989

Tech support: 800-345-3828 press number 4 after operator

Internet Telnet: duats.gtefsd.com

Internet Web: <http://www.duats.com>

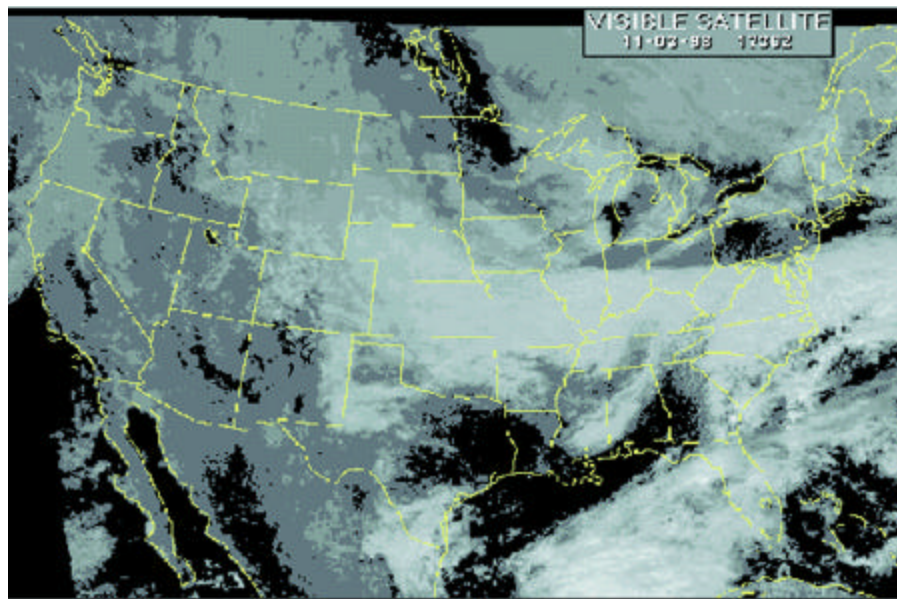
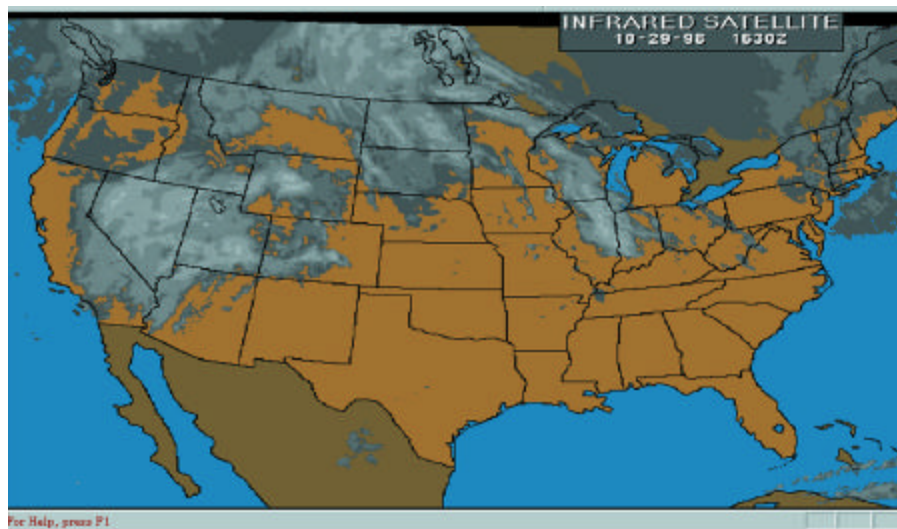
tions are set up in the Windows Control Panel. To check the configuration, go to "Control Panel" and select Modem. This is where you will make any settings and/or changes to you modem configuration. Cirrus will use these settings automatically.

Once you have made the proper changes or if you could already connect to DUATS, you have the option to use dial-up or the Internet.

If you are still unable to connect call 1-800-345-3828 and a Help Desk Representative will provide assistance or you can send an e-mail to duats@gsc.gte.com.

New Enhanced Weather Maps

We have added a new weather graphics menu to Version 3.0. Because of the nature of the graphics, Version 3.0 has a new graphics viewer that will work on Win 95, 98, and NT Operating Systems. Currently we have Satellite Infrared and Satellite Visual. The IR is available 24 hours a day. The visual is only available during daylight hours; availability starts at Sunrise on the East Coast and continues until Sunset on the West Coast.



Remember, we also provide a free 56 day electronic upgrade to the Airports and Nav aids data base used by Cirrus. You can get on the automatic e-mail list or download the data from www.duats.com.

For those that wish to have a hard copy of the Cirrus updates on CD or diskette, there will now be shipping and handling fee of \$4.95 to help defray the cost of mailing (**this charge will be waived for first time recipients of the Cirrus software**). You can always obtain free electronic updates from GTE DUATS by sending us a email request at: DUATS@gsc.gte.com.

In-Flight Planning Addition

The Flight Planner will now accept "None" in the departure time block and provide a no-wind flight plan. We also have added a check box to give you the option to elect "File this Flight Plan" before you initiate the connection.

Correction to File Flight Plan

Under type of Flight Plan, Cirrus will now default to the last checked type.



How do I get Cirrus 3.0?

You can download the latest version free from our Web page www.duats.com. We can send a free upgrade via e-mail. We can send the entire program free via e-mail. You can pick up a free copy at any show we attend. Please contact us at 1-800-345-3828 or send an e-mail to DUATS@gsc.gte.com. If you can accept the upgrade via e-mail, please let us know.

DUATS WANTS YOU!

Your comments are appreciated.

You, the pilot, are the ultimate user of our system. Your continued support helps determine our success. If a problem is discovered while using DUATS, please let us know by calling 1-800-345-3828 or emailing a message to DUATS@gsc.gte.com.