

File Flight Plan

Filing a flight plan is easy with Cirrus. Simply fill in the required fields, and your flight plan will be filed when you dial DUATS. When you select this option, the Departure, Destination, and Route of Flight fields will automatically be filled in with the route you planned on the flight planning chart. If you have not planned a flight, you can fill the information in here. The fields should be filled in as follows:

Type Required: Choose IFR, VFR or DVFR.

Aircraft Ident: Enter your aircraft registration or flight number, be sure to type the complete registration, (i.e., N1234X.) If you have created a database of aircraft you may choose a registration number from this list. This will automatically fill in several other related fields for you, **True Airspeed, Aircraft Type and Special Equipment, and Color.** You can create a database of Aircraft and Pilots by selecting Database from the "Edit" menu or selecting the Icon, (Pilot with Headset).

Note: When using a flight number that does not start with "N", you will be prompted, "Do you want to use this tail number." Respond with "Y".

Aircraft Type/Special Equipment: Enter your aircraft model number and special equipment code in the format MODEL/EQUIP (Examples: AA5/A, C172/U, BE90/R). If you have selected an aircraft from your aircraft database, this field will be automatically filled in for you.

Note: For Traffic Alert and Collision Avoidance System (TCAS)/Heavy equipped aircraft, add the prefix T for TCAS, H for Heavy, or B for both, followed by a slash to the aircraft type: (e.g., H/DC10/G).

For additional information on Aircraft Type refer to the article in this issue on "Aircraft Designators".

True Airspeed: Enter the true airspeed, in knots or Mach, for your flight.

Departure Point: Enter LOCATION ID. Either three or four character identifier may be used. Example: BOS or KBOS.

Departure Time: Enter proposed DEPARTURE TIME in Universal Coordinated Time (UTC) as (hhmm), or (+mmmm) format.

Example: hhmm - 2200. Example-2: +mmmm, where mmmm is the number of minutes past the current time (e.g., +45). Valid numbers are from +0 to +1439 minutes.

Cruising Altitude: Enter requested Flight Level.

Example: 120 for 12,000 feet.

Example: 80 for 8,000 feet. No "leading" zeros are required.

Route of Flight: Enter the route of flight using spaces between route elements.

Route Elements that are acceptable.

Enter nothing or DIRECT for great circle routing.

Enter a sequence of route elements separated by SPACES.

Route elements can consist of the following in any valid sequence:

AIRPORT	2 to 4 alphanumeric (If a NAVAID with the same ID exist, the FAA will expect you to fly over the NAVAID.)
NAVAID	2 to 3 alphanumeric
AIRWAY	2 to 4 alphanumeric
FIX	5 alphanumeric

Control routes	Victor routes
Jet routes	Colored routes
RNAV routes	Atlantic routes
Bahamas routes	LF/MF routes
Low/High frequency routes	
SOCAL routes	

SID (Standard Instrument Departure Route) (e.g., SUMMA2 SUMMA)
 STAR (Standard Arrival Route) (e.g., IRONS IRONS2)

Fix Radial Distance (eight to eleven characters)- two to five character navi-

Please retain your DUATS Newsletters for Future Reference.

DUATS...Still the Fastest Way into the Air & Still Free

Download the latest version of the Cirrus software 2.2 from either the Internet or place your order by calling 1-800-345-3828 or 1-703-818-4634

Data line: 800-767-9989

Tech support: 800-345-3828 press number 4 after operator

Internet Telnet: duats.gtefsd.com

Internet Web: <http://isd.gte.com/gtefsd/aviation/>

gational aid id, followed by 3 digit degrees magnetic and 3 digit distance in nautical miles with no spaces between characters. *Example:* BTG045007 identifies a fix 7 NM 045 degrees from the BTG VORTAC. Latitude/Longitude (ddmm/ddmm or dmm/ddmm) North latitudes and West longitudes only. *Example:* 4500/12105

En Route Delays - consists of an element separator (/), followed by the letter D, followed by the hours and minutes separated by a plus sign (+). *Example:* a fifteen minute en route delay at Nottingham VORTAC is typed OTT/D0+15.

Destination point: Enter LOCATION ID. Either three or four character identifier may be used. *Example:* BOS or KBOS.

ETE: Enter your estimated time en route in hours and minutes (hhmm). *Example* 0230, represents 2 hours and 30 minutes.

Remarks: 60 characters maximum. Remarks should provide information for ATC purposes or to assist search operations, plus any other data appropriate to the flight. (Use applicable FAA/NWS contractions whenever possible.)

Note: Civil aircraft with authorized company identifications are required to file the full authorized radio call in remarks..

Fuel on Board: Enter fuel on board in hours and minutes (hhmm) *Example:* 0230, represents 2 hours and 30 minutes. **NOTE:** According to FAR 91.151, fuel on board an airplane should be at least estimated time en route + 30 minutes (day VFR) or 45 minutes (night VFR or IFR).

Alternate Airport: Enter LOCATION ID. Either three or four character identifier may be used. *Example:* BOS or KBOS. You may specify more than one alternate. Loc Ids must be separated by spaces and you can enter a maximum of 5 locations.

Pilot Name: Enter the pilot's name. If you have created a database of pilots you may choose a pilot from this list. This will automatically fill in several other related fields for you, **Address, Phone, and Home Base.** **NOTE:** DUATS will not use this name; it substitutes the name of the pilot on the DUATS account. This is the only field overridden by DUATS stored information.

Address: Enter the full address.

Phone: Enter the phone number in the format xxx-xxx-xxxx.

Home Base: Enter the identifier of the aircraft's home base.

Num Abd: Enter the number of persons aboard the aircraft, including the crew.

Color of Aircraft: (Required) Enter the color of the aircraft. If you have selected an aircraft from your aircraft database, this field will be automatically filled in for you. Enter the color carefully using the following words or abbreviations (12 characters maximum).

Use either the CODE or the WORD from the following list:

A	Amber	GD	Gold	S	Silver
B	Blue	GY	Gray	T	Tan
BE	Beige	M	Maroon	TQ	Turquoise
BK	Black	O	Orange	V	Violet
BR	Brown	P	Purple	W	White
G	Green	Pk	Pink	Y	Yellow
	R		Red		

Separate colors by slashes, primary color first. *Example:* 'RED/BLACK' or 'R/BK'

Destination Contact: Enter a name of a person who can be reached at your destination.

Destination Phone: Enter the phone number of the person specified in Destination Contact in the format xxx-xxx-xxxx.

Transfer Plan To Map: Clicking this button will take the flight plan you have entered on this form and transfer it to the flight planning chart. For this to work, the Departure, Destination, and Route boxes must consist of valid identifiers from the Cirrus navigation database. Cirrus automatically sizes the chart to display the entire route.

OK: Choose the OK button to complete your entries to this script.

Cancel: Choose the Cancel button to abandon this script.

Updated Aircraft Designators

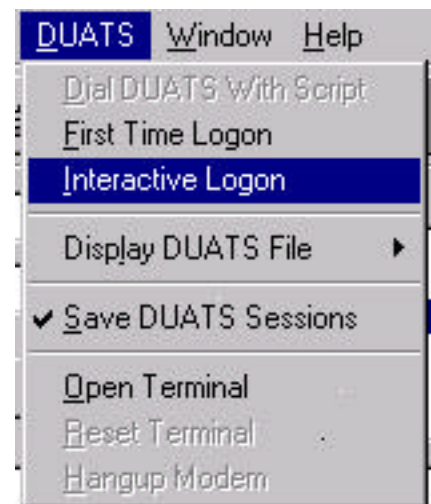
To comply with the International Civil Aviation Organization ((ICAO) standards for Aircraft type designators, the Federal Aviation Administration (FAA) has made significant changes to the FAA Contractions Manual (7340.1 Appendix A) which currently lists aircraft type designators as we know them today as well as the "new" ICAO approved designators.

The GTE DUATS data base has been updated to include these new aircraft designators. Both the old and the new designators will be maintained in DUATS until September 1998. After September only the ICAO designators will be available.

Note: The "new" designator should be used when filling a flight plan.

To obtain Aircraft Types:

Enter DUATS Interactively (you are logged into the DUATS computer where you select a Menu or Function and the computer responds with a prompt.) This can be done by simply dialing 1-800-767-9989 through your modem and entering your Access Code and Password. If you are using Cirrus select "Interactive" from the menu "DUATS".



Now you are in the DUATS computer. From the GTE DUATS Main Menu Select 5 - Modify Personal Profile Data Select 8- Aircraft Type/Special Equip. At the prompt enter a ? followed by the aircraft manufacturer's name or Aircraft designator. Examples: ?Cessna; ?Experimental; ?Piper; ?PA28; ?C172. A ? followed by a space will provide a complete list of all aircraft.

If you use manufacturer a list of designators for aircraft built by that manufacturer will be provided. This list will show both "new" and "old" designators. If a designator has been replaced by the ICAO standards it will be followed by the word "old". These "old" designators will be removed from DUATS in September 1998.

If you use aircraft designator to search you will only get aircraft listed under that specific designator and depending on your request you will not see the "new" one or the "old" one as the case may be.