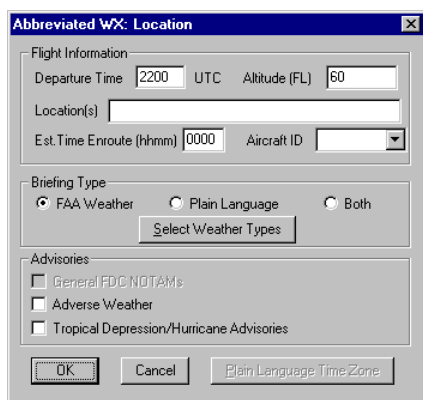


Abbreviated Location Weather Briefings Using Cirrus

Abbreviated Briefings, unlike Standard and Outlook Briefings, allow pilots to select their weather types. To get an **Abbreviated WX: Location** briefing, double click on this item from the menu in the Command List. The Abbreviated WX: Location form will pop-up. For detailed instructions on filling out the dialog box just hit the F1 function key and a help screen for that box will appear, or you can refer to the "Basic Weather Dialog Box Format" article in AOPA GTE "DUATS Flyer" Issue No. 14. You can enter up to 10 Location Identifiers separated by spaces. *Example:* IAD BWI DCA. Weather is available in both the FAA and Plain Language format. You can select by clicking on a weather type from the list under **Select Weather Types**. When the weather has been selected a *Check Mark* will appear. Ctrl + A will select all of the weather types, Ctrl + C will clear all of the existing checked weather; and, if you desire, you can use the space bar to select or deselect. The three items on the form under **Advisories** are optional. General FDC NOTAMs will only be available if NOTAM-D is selected. When you complete the dialog box, click OK. **Abbreviated WX: Location**, will appear in the Scripts Command window. You are now ready to dial and get the Weather.



Not all weather types are available at all locations. If a location you requested does not offer the weather type(s) requested, you will not get the weather for that location. This is particularly important when requesting **FA, WW, WS, WST, CWA, WW-A, ATC, WH, AWW, AC, and WA**. If the reporting facility for these types of weather is not one of your requested locations, you will not get any information concerning these reports. To get these reports you can include the reporting facility for the desired type.

Example: If you desire the *FA* for *BOS* simply include *BOS* as one of your locations. For a listing of weather stations that provide adverse weather refer to the article "How DUATS Retrieves and Displays Weather" in the AOPA GTE "DUATS Flyer" Issue No. 13.

If you check Adverse Weather you will automatically get all available adverse weather. Only the portion of the **FA** that affects the requested area(s) will be provided.

ATC Delay and Flow Control Advisories: are also available. They are designed to adjust the flow of traffic into a given airspace, along a given route, or bound for a given air-drome to ensure the most effective utilization of the airspace. If ATC Delay and Flow Control Advisories apply to a requested location they will be provided.

GPS and LORAN NOTAMs are available. To receive these enter GPS and/or LRN as identifiers in the Location box. Insure you have selected NOTAM-D as a weather type.

Quick Start Guide for your Cirrus Software

This is your guide to learning the basic operation of Cirrus. Follow the steps described and when you finish you will be able to easily retrieve weather information and file flight plans.

1. Now you have successfully logged on for the first time, or if you have already established an Access # and Password previously, you are now ready to start using Cirrus to access GTE DUATS and retrieve weather and file flight plans.

Please retain your DUATS Newsletters for Future Reference.

2. Locate the DUATS Command box, this is where you will find all of your dial-in options.



3. Be sure that your Access # and Password are entered correctly. Scroll up and down the Command list to see all the different dial-in options available. To choose a dial-in option; either double click on the option, or click once on the option so it becomes highlighted, then click on Add. This will then open a dialog window where you will enter all the required information, then click OK.

4. The option you selected from the Command List will move to the box labeled Script Commands. If it does not get displayed in the Script Commands box that means you have not filled in one of the fields correctly. Cirrus will tell you which field was not correct and ask you to change it before allowing you to dial-in.

5. Now that the dial-in option is displayed in the Script Command box just click on the dial button. You will see text scrolling up the screen, this is the information you requested being transferred from GTE DUATS to your computer. When the session is done you will get a message that tells you to use the scroll bar on the right side of your screen to view the session text. You have now successfully completed your first session using Cirrus.

6. With the options in the Command List you can also retrieve graphic weather maps, file flight plans and use the encode/decode feature to identify airports and VOR's. For further help or technical support contact the GTE DUATS help desk.

GTE DUATS will move to a new location this year at EAA Oshkosh, our new location is in the North Aviation Exhibit Hangar C Booth #3151-3152

Come by and see us, and pick up your **FREE** Cirrus software on CD ROM

DUATS...Still the Fastest Way into the Air & Still Free

Download the latest version of the Cirrus software 2.2 from either the Internet or place your order by calling 1-800-345-3828 or 1-703-818-4634

Data line: 800-767-9989

Tech support: 800-345-3828 press number 4 after operator

Internet Telnet: duats.gtefsd.com

Internet Web: <http://www.gtefsd.com/aviation/GTEaviation.html>

Weather Schedules

Weather information is constantly being delivered to the GTE DUAT System. In the Table below, Delivery times are when weather products are received, and Valid indicates a start or time frame when the product can be used. There are two criteria to update weather products; one is, replace upon receipt of new product, the other is, replace at the specified valid time. For this reason you will sometimes see delivery time differ from the Valid time. All weather maps are replaced upon receipt of the new product. The FAA weather will vary depending on the product and the valid time.

Graphic Maps	Frequency	Delivery Times	Valid
Composite Moisture Stability Chart	2 Times a day	05Z and 19Z	12 Hours
24 Hour Severe Weather Outlook	Once a day	12Z	24 Hours
48 Hour Severe Weather Outlook	Once a day	12Z	24 Hours
US High Level Weather 00Z	2 Times a day	00Z, and 12Z	12 Hours
US High Level Weather 12Z	2 Times a day	00Z, and 12Z	12 Hours
US Low Level Weather 00Z	2 Times a day	00Z, and 12Z	12 Hours
US Low Level Weather 12Z	2 Times a day	00Z, and 12Z	12 Hours
12 Hour Surface Forecast	2 Times a day	00Z and 12Z	12 Hours
24 Hour Surface Forecast	2 Times a day	00Z and 12Z	12 Hours
36 Hour Surface Forecast	2 Times a day	00Z and 12Z	12 Hours
48 Hour Surface Forecast	2 Times a day	00Z and 12Z	12 Hours
US Radar	Hourly	10 Min Until Each Hour	1 Hour
Surface Analysis	8 Times a day	20 Min After Synoptic Hour	3 Hours
Weather Depiction	8 Times a day	15 Min After Synoptic Hour	3 Hours

Text Weather Schedule

		Frequency	Delivery	Valid
Surface Observations	METAR	Hourly + Unscheduled	H+00	1 Hour
	ASOS	Hourly + every 20 min		Until Next Hourly
	Specials	Unscheduled		Until Next Hourly
Weather Trends (3 hrs of METARs)	TW	Last 3 hrs of METARs		
	TAF	4 Times a Day	2330Z 0530Z 1130Z 1730Z	00-00Z 06-06Z 12-12Z 18-18Z
Pilot Reports	UA	When available	Unscheduled	
Radar Summaries	SD	Hourly	35 Min past each hour	1 Hour
NOTAM-D	NO	As needed	Unscheduled	
SIGMETs	WS	As needed	Unscheduled	
AIRMETs	WA	4 Times a Day	0145Z	02-08Z
			0745Z	08-14Z
			1245Z	14-20Z
			1945Z	20-02Z
Amended Severe Weather Forecasts	WW-A	As needed	Unscheduled	
Center Weather Advisories	CWA	As needed	Unscheduled	
Convective SIGMETs	WST	Hourly	55 Min past each hour -	4 hours
Flow Control Advisories	ATC	As needed	Unscheduled	
Hurricane and Tropical Depressions	WH	As needed	Unscheduled	
Severe Weather Forecast Alerts	AWW	As needed	Unscheduled	
Severe Weather Outlooks	AC	2 Times a Day	07Z and 15Z	12 hours
Severe Weather Warnings	WW	As needed	Unscheduled	
Winds Aloft Forecasts	FD	2 Times a Day	0440Z and 1640Z.	
FD 1/2/3 are for 3,6,9,12,18,24,34, and 39 Thousand Foot Levels, FD 8/9/10 are for 45 and 53 Thousand Foot Levels.				Valid
		FDs issued at 0440Z	FD 1/8	0500-0900Z
			FD 2/9	0900-1800Z
			FD 3/10	1800-0500Z
		FDs issued at 1640Z	FD 1/8	1700-2100Z
			FD 2/9	2100-0600Z
			FD 3/10	0600-1700Z

This use period schedule provides winds for up to 24 hours in advance. Previous FDs are replaced to insure no overlap and always provide you with the current forecast.

Area Forecasts **FA** 3 Times a Day 12 Hours
 There are six stations that report FA's US, three in Alaska, and one in Hawaii. Listed below are the delivery times for these stations.

	Delivery Times		Delivery Times		Delivery Times
BOS/MIA	0030/0130Z	CHI/DFW	0130/0230Z	SLC/SFO	0230/0330Z
	0830/0930Z		0930/1030Z		1030/1130Z
	1730/1830Z		1830/1930Z		1930/2030Z
ANC/FAI	0640Z	JNU	0640Z	HNL	0340Z
	1440Z		1340Z		0940Z
	2240Z		2240Z		1540Z 2140Z

BOS, MIA, CHI, DFW, SLC, and SFO-UTC delivery time is determined by daylight or standard times.

If weather is not received for 2 minutes the following disclaimer will be displayed: **“Weather NOTAMs data may not be totally current due to a loss of incoming data at XXXXZ time. A re-check of conditions prior to departure may be warranted.”** This message will be displayed until weather data is received or 15 minutes elapses. At the 15 minute mark, Weather briefings will be disabled and the following message displayed: **“No Weather/NOTAM data is currently available due to loss of incoming data at this time XXXXZ. You may go ahead and file a flight plan or access the system later for full service.”** When the weather data service is resumed and the data for the down period has been recovered, the above disclaimer will be removed. Occasionally the US NOTAM office can not deliver NOTAM. When this occurs, the following disclaimer will be displayed: **“NOTAM data may not be current due to a US NOTAM service interruption at XXXXZ. A re-check of data prior to departure may be warranted.”** This disclaimer is removed when the NOTAM office returns to service.

CWA cancellation messages are now being issued with references to specific SIGMETs that contains pertinent weather information. *EXAMPLE:* ZAB1 CWA 082035 ZAB CWA 103 Valid Until 082035 ...Canceled... See SIGMET 3W and 53C.