



Filing SIDs and STARs in DUATS

First let's look at some definitions:

STANDARD INSTRUMENT DEPARTURE (SID) – A preplanned instrument flight rule (IFR) air traffic control (ATC) departure procedure for the pilot/controller. It can be represented in graphic and/or textual form to provide obstacle clearance and a transition from the terminal area to the appropriate en route structure. SIDs are primarily designed for system enhancement to expedite traffic flow and to reduce pilot/controller workload.

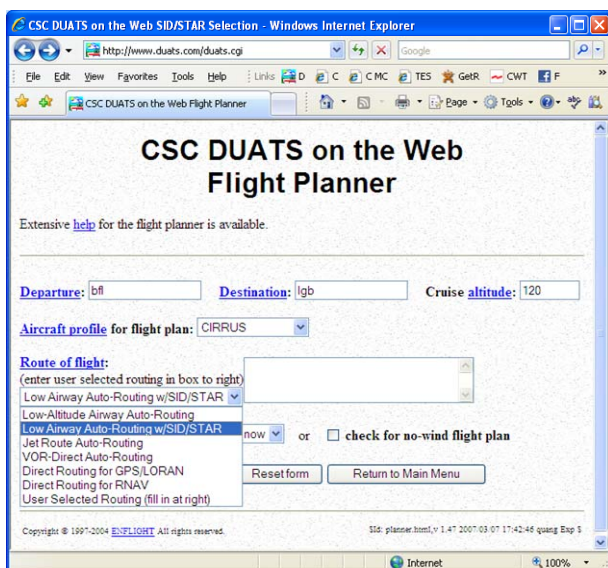
STANDARD TERMINAL ARRIVAL (STAR) – A preplanned IFR ATC arrival procedure published for the pilot/controller. It can be represented in graphic and/or textual form. STARs provide transition from the en route structure to an outer fix or an instrument approach fix/arrival waypoint in the terminal area.

ATC clearance must always be received prior to flying a SID or STAR.

To file these procedures through DUATS, you should enter the short name for the desired transition. An example for a SID is MARIC3.GMN and for a STAR is FLW.TANDY3. Transitions such as GMN and FLW are either fixes or NAVAIDS that will correctly put you into either the high or low altitude structure. Each procedure will have entries or exits from one or multiple transitions.

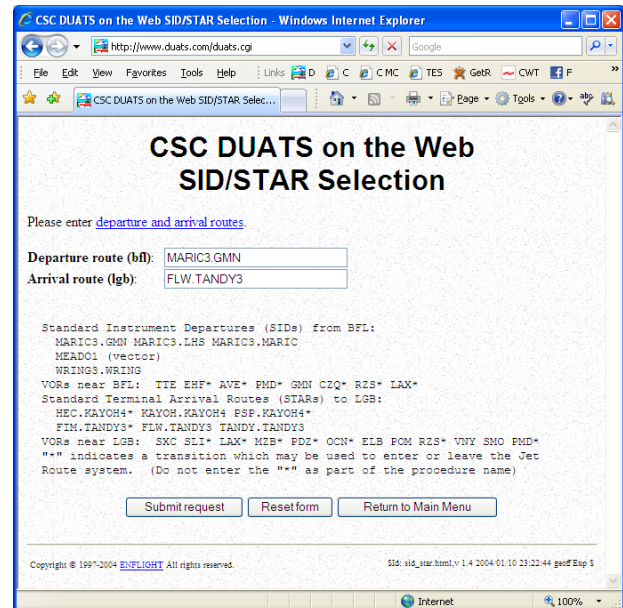
Filing SID/STARs via Web DUATS

The easiest way to file these procedures is to use the Web DUATS flight planner. First select "Low Airway Auto-Routing w/SID/STAR" or "Jet Route Auto-Routing" from the "Route of flight" drop down menu.



The flight planner will offer all of the valid SIDs and STARs for the departure and destination that you have entered.

You must then select a SID from the list and copy it to the "Departure route (bfl):" entry box and a STAR from the list copying it to the "Arrival route (lgb):" entry box. (see top right)



The Flight planner will return you a flight plan using your selected SID and STAR along with an optimized route using airways along with a complete flight log (see partial example on the back).

If you elect not to use the auto router of the flight planner and enter your own jet routing using the "User Selected Routing" option in the flight planner, type the short name including the "dot" for the SID and STAR. For example "MARIC3.GMN" and "FLW.TANDY3". You must make sure the transitions (GMN and FLW) are on your entered jet airway(s).

For jet routing, make sure you select a high altitude transition, marked with an "*" . Normally, you can use any transition for low airways. In the rare event an asterisk transition does not work for low airways, you will need to select another.

Most SIDs and STARs are designed with a base leg and transitions which are either pre-pended (STARs) or appended (SIDs) to that base. Base legs (usually the name of the procedure) may not be adapted to be used as a transition, and in these cases they may not be accepted by the Center computer. When filing through DUATS, if any transition is not accepted by the Center computer, the DUATS 365x24x7 operators will correct the flight plan so that it will be accepted by FAA. You will receive a FRC upon activation in this case.

Please retain your DUATS Newsletters for future reference.

DUATS...Still the Fastest Way into the Air and Still Free

Download the latest Golden Eagle FlightPrep software from **FlightPrep.com** or call for a free disk at **1-800-345-3828** or **1-703-818-5404** or e-mail **duats@duats.com**

Data line: 800-767-9989

Tech Support: 800-345-3828 press number 4

FAX: 703-818-4723

Internet Telnet: direct.duats.com

Internet Web: <http://www.duats.com> or <http://131.131.7.104>

Secure Web: <https://www.duats.com>

Flight Plan BFL-LGB - Windows Internet Explorer

http://www.duats.com/duats.cgi

CSC DUATS on the Web Flight Plan BFL-LGB

From: BFL -- Bakersfield CA (Meadows Field)
 To: LGB -- Long Beach CA (Long Beach /Daugherty Field/)
 Alt.: 12,000 ft. Profile: CIRRUS
 Time: Mon Feb 22 21:41 (UTC)

Routing options selected: SID, Automatic low altitude airway, STAR.
 Flight plan route:
 MARIC3 GMN V299 V12 V485 FLW TANDY3
 Flight totals: fuel: 24 gallons, time: 1:49, distance 296.2 nm.

Ident	Type/Morse Code	Name or Fix/radial/dist	Latitude	Longitude	Alt.	Route	Mag	KTS	Fuel	Time
						Winds	Crs	IAS	Dist	
						Temp	Hdg	GS	Dist	
1.	BFL Apt.	Bakersfield CA (Meadows)	35:26.0	119:03.5	5	MARIC3			2.8	296
						048/8	207	120	0:07	
2.	MARIC Int.	AVER109 EHF196/17	35:14.3	119:16.2	93	MARIC3	+1 C	207	128	15
						006/22	112	148	0:08	
3.	NINETY Int.	AVER109/62 EHF150	35:02.8	118:56.7	120	MARIC3	-3 C	104	158	20
						002/28	150	160	0:05	
4.	GMN --	d116.1 Gorman	34:48.2	118:51.7	120	V299	-4 C	147	187	15
						002/28	166	160	0:04	

Filing SID/STARs Directly in Flight Plan Form

When filing SID/STARs in the CSC DUATS flight plan form, no dot is needed between the procedure name and transition. Using the same route that was generated by the flight planner above, you would enter "MARIC3 GMN V299 V12 V485 FLW TANDY3" into the route box of the flight plan form.

Precision SIDs/STARs

Precision SIDs/STARs are terminal arrival or departure procedures that utilize **Space Based Waypoints**. These types of procedures are identified by the term "RNAV" in the title. To fly a RNAV SID/STAR, you must also have the required equipment in your aircraft. Most IFR GPS systems already meet the requirements. For RNAV type 1 requirements you must maintain an RNP of 1 NM for 95% of your flight time. Type 2 routes require a 2 NM RNP for 95%. Your navigation equipment will indicate which type of route you are capable of flying. Use the domestic ICAO flight plan to file RNAV SIDs/STARs or routes.

Visit CSC DUATS at Sun 'n Fun in Tampa, Florida and Attend CSC Forum Sessions

CSC DUATS will be at the Sun 'n Fun in Tampa, Florida, April 13th through April 18th in Building D, booth D065 and D066. If you are going to the show, make sure you drop in on the CSC Forum presentations in the Forum Tents. Sessions will be given on the following days:

CSC Forum Presentations

Free FAA Certified Flight Planning Software

Web DUATS - Tuesday, 4/13, 11:00 am at Tent 8


Golden Eagle - Wednesday, 4/14, 1:00 pm at Tent 8

Web DUATS - Thursday, 4/15, 12:00 pm at Tent 5

Golden Eagle - Saturday, 4/17, 12:00 pm at Tent 8

Join the CSC DUATS Group on

Go to www.facebook.com and sign up for an account. Join other pilots in the Facebook group DUATS. Get announcements on new features in CSC DUATS as well as a chance to connect with other pilots who use CSC DUATS.



Sun 'n Fun is April 13-18
Visit our store in B-36/37

To order go to www.flightprep.com,
email sales@flightprep.com or call
800.966.4360

Sun 'n Fun is a registered trade mark of SUN 'n FUN International Fly-In & Expo.


ChartBook™ EFB

CSC DUATS delivers the fastest and most accurate flight briefing information available; ChartBook™ uses DUATS data & services.


ChartBook™ is your best choice for Electronic Flight Bag and comprehensive flight planning.

Upgrade your Golden Eagle FlightPrep™ flight planner to ChartBook™ EFB and fly with Aviation Consumer's® "Top-Pick" Electronic Flight Bag!


- Electronic Flight Bag with GPS
- Sectional & TAC Charts
- IFR Enroute Charts & Plates
- GPS Position on all Charts & Plates
- 3D Synthetic Vision & Terrain
- Touch screen
- XM Weather Capable
- CSC DUATS Weather



**3D HITS/
Digital Charts**



GPS Position



ESSENTIAL TO EVERY MISSION™
FlightPrep, a division of Stenbock & Everson Inc.
22781 Airport Rd. N.E. D-1 Aurora, OR 97002
© stenbock & everson inc. all rights reserved.